

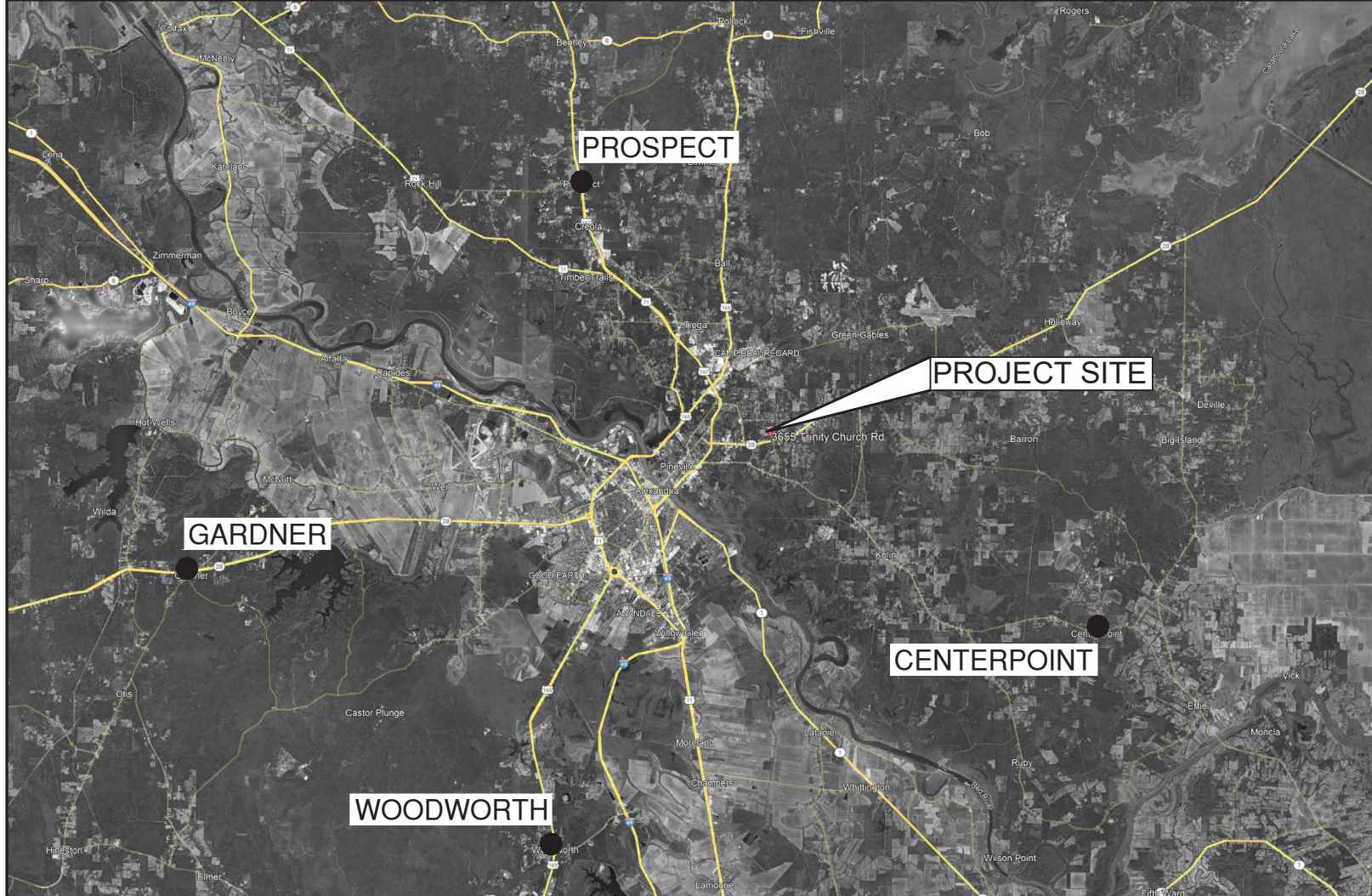
IMPROVEMENTS TO  
J.I. BARRON ELEMENTARY SCHOOL  
PINEVILLE, LOUISIANA  
RPSB# 52-26-01

PROJECT LOCATION MAP



3655 TRINITY CHURCH RD, PINEVILLE, LA 71360

PROJECT VICINITY MAP



RAPIDES PARISH SCHOOL BOARD - OWNER

JEFF POWELL - SUPERINTENDENT

STEVE BERRY - PRESIDENT  
DISTRICT B - WARD 9, 10, 11

MARK DRYDEN - VICE PRESIDENT  
DISTRICT C - WARD 9, 10, 11

WILTON BARRIOS  
WILLARD B. MCCALL  
DR. STEPHEN CHAPMAN  
LINDA BURGESS  
WALLY FALL  
GEORGE JOHNSON  
SANDRA FRANKLIN

DISTRICT A - WARD 10, 11  
DISTRICT D - WARD 1, 8  
DISTRICT E - WARD 1, 2, 5, 7, 8  
DISTRICT F - WARD 1, 2  
DISTRICT G - WARD 1, 8  
DISTRICT H - WARD 2, 3, 4, 5, 6  
DISTRICT I - WARD 1, 8

SCHEDULE OF DRAWINGS

- CIVIL:
- C1 TOPOGRAPHIC SURVEY
  - C2 FENCING PLAN AND DETAILS
  - C3 DRAINAGE PLAN
  - C4 DRAINAGE DETAILS
- ARCHITECTURAL:
- A101 SITE PLAN
  - A200 DEMOLITION FLOOR PLAN
  - A201 OVERALL FLOOR PLAN
  - A202 ENLARGED FLOOR PLANS
  - A203 ENLARGED FLOOR PLANS
  - A210 DEMOLITION ROOF PLAN
  - A211 ROOF PLAN
  - A301 EXTERIOR ELEVATIONS
  - A401 BUILDING SECTIONS & WALL SECTIONS
  - A402 SECTIONS & DETAILS

- STRUCTURAL:
- S100 GENERAL STRUCTURAL NOTES, ROOF RETROFIT SECTIONS AND DETAILS
  - S200 PARTIAL EXISTING ROOF FRAMING PLAN - BUILDING A AND WEST END OF BLDG B
  - S201 PARTIAL EXISTING ROOF FRAMING PLAN - EAST END OF BLDG B
  - S202 PARTIAL EXISTING ROOF FRAMING PLAN - BLDG C
  - S300 PARTIAL ROOF RETROFIT COLUMN LAYOUT/PLAN - BLDG A AND WEST END OF BLDG B
  - S301 PARTIAL ROOF RETROFIT COLUMN LAYOUT/PLAN - EAST END OF BLDG B
  - S302 PARTIAL ROOF RETROFIT COLUMN LAYOUT/PLAN - BUILDING C
  - S400 PARTIAL ROOF RETROFIT RAFTER AND PURLIN LAYOUT/PLAN - BLDG A AND WEST END OF BLDG B
  - S401 PARTIAL ROOF RETROFIT RAFTER AND PURLIN LAYOUT/PLAN - EAST END OF BLDG B
  - S402 PARTIAL ROOF RETROFIT RAFTER AND PURLIN LAYOUT/PLAN - BLDG C
  - S500 RETROFIT ROOF FRAMING SECTIONS AND DETAILS
  - S501 RETROFIT ROOF FRAMING SECTIONS AND DETAILS
  - S502 RETROFIT ROOF FRAMING SECTIONS AND DETAILS

- PLUMBING:
- P000 PLUMBING LEGEND
  - P101 PLUMBING ROOF PLAN- DEMOLITION
  - P201 PLUMBING ROOF PLAN- NEW
  - P301 PLUMBING FLOOR PLAN- NEW
  - P401 PLUMBING DETAILS AND SCHEDULES

- MECHANICAL:
- M000 MECHANICAL LEGEND
  - M101 MECHANICAL ROOF PLAN- DEMOLITION
  - M201 MECHANICAL FLOOR PLAN- NEW
  - M202 MECHANICAL ROOF PLAN- NEW
  - M301 MECHANICAL DETAILS AND SCHEDULES

- ELECTRICAL:
- E000 ELECTRICAL LEGEND
  - E101 ELECTRICAL ROOF PLAN- DEMOLITION
  - E201 ELECTRICAL FLOOR PLAN- NEW
  - E202 ELECTRICAL FLOOR PLAN- GYMNASIUM
  - E301 ELECTRICAL ROOF PLAN- NEW

**YWA** YEAGER, WATSON & ASSOCIATES, LLC

118 SOUTH TRENTON STREET  
RUSTON, LOUISIANA 71270-4432

ARCHITECTS  
OFC: (318) 202-5708

PAN AMERICAN ENGINEERS, INC.  
Consulting Civil Engineers  
1717 Jackson Street, Alexandria, LA 71301  
Telephone (318) 473-2100

FERGUS ENGINEERING  
Consulting Structural Engineers  
1058 Inca Drive, Laramie, WY 82072  
Telephone (970) 817-4600

M & E CONSULTING  
Consulting Mechanical / Electrical Engineers  
1304 Bertrand Drive, Suite F7, Lafayette, LA 70506  
Telephone (337) 234-7474

